

## 39 Pindari Crescent, Goonellabah

### Table of Contents

- | [Property Details](#)
- | [Photo Gallery](#)
- | [Map](#)
- | [Contact For Inspection](#)

## Property Details

**39 Pindari Crescent, Goonellabah**



**FAMILY HOME WITH POOL**

**3**  **2**  **1** 

Discover the perfect family home, complete with an inground pool, fenced yard for pets and a fantastic neighbourhood!

This spacious 3 bedroom home features built-in robes in all rooms, while the open plan living area boasts modern styling, air conditioning and a spacious kitchen. A second living space at the rear offers versatility, ideal as a kids' retreat, media room or home office.

Step outside onto the covered timber deck, where you can entertain year-round while overlooking the sparkling pool and backyard. The pool area includes a covered relaxation space plus a second toilet and shower for convenience.

Other standout features include a 24-panel solar power system to help with electricity bills and a prime location just a short walk to Goonellabah Tavern and Kadina High School.

This home won't last long - call today to arrange your inspection!

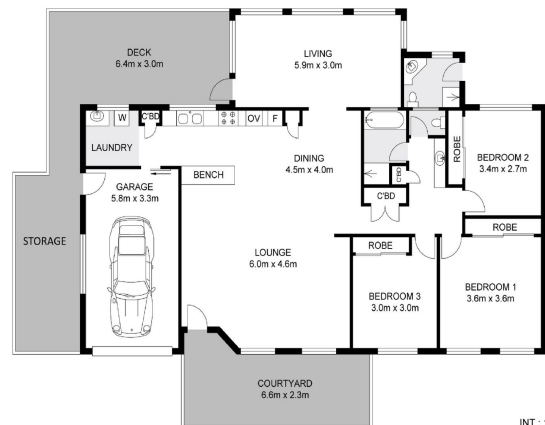
- 3 Bedrooms
- 2 Bathrooms
- 1 Garage
- Air Conditioning
- In Ground Pool
- Remote Garage
- Deck
- Fully Fenced
- Built In Robes
- Dishwasher

---

**\$729,000**

## Photo Gallery



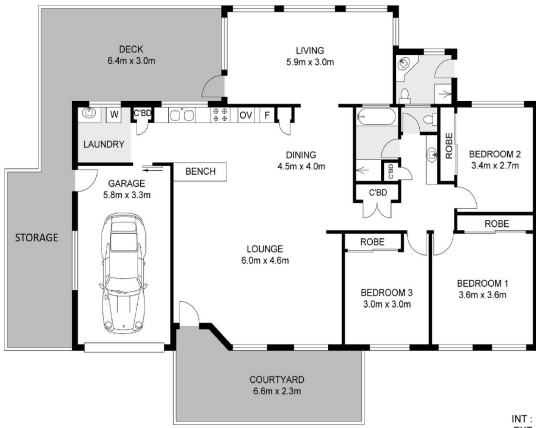


Dimensions are approximate. All information contained herein gathered from sources we believe to be reliable. However we cannot guarantee its accuracy and interested persons should rely on their own enquiries. © visionmedia vision 2025.

**39 Pindari Crescent, Goonellabah**

INT - 125.35m<sup>2</sup>  
EXT - 51.10m<sup>2</sup>  
GARAGE - 19.14m<sup>2</sup>





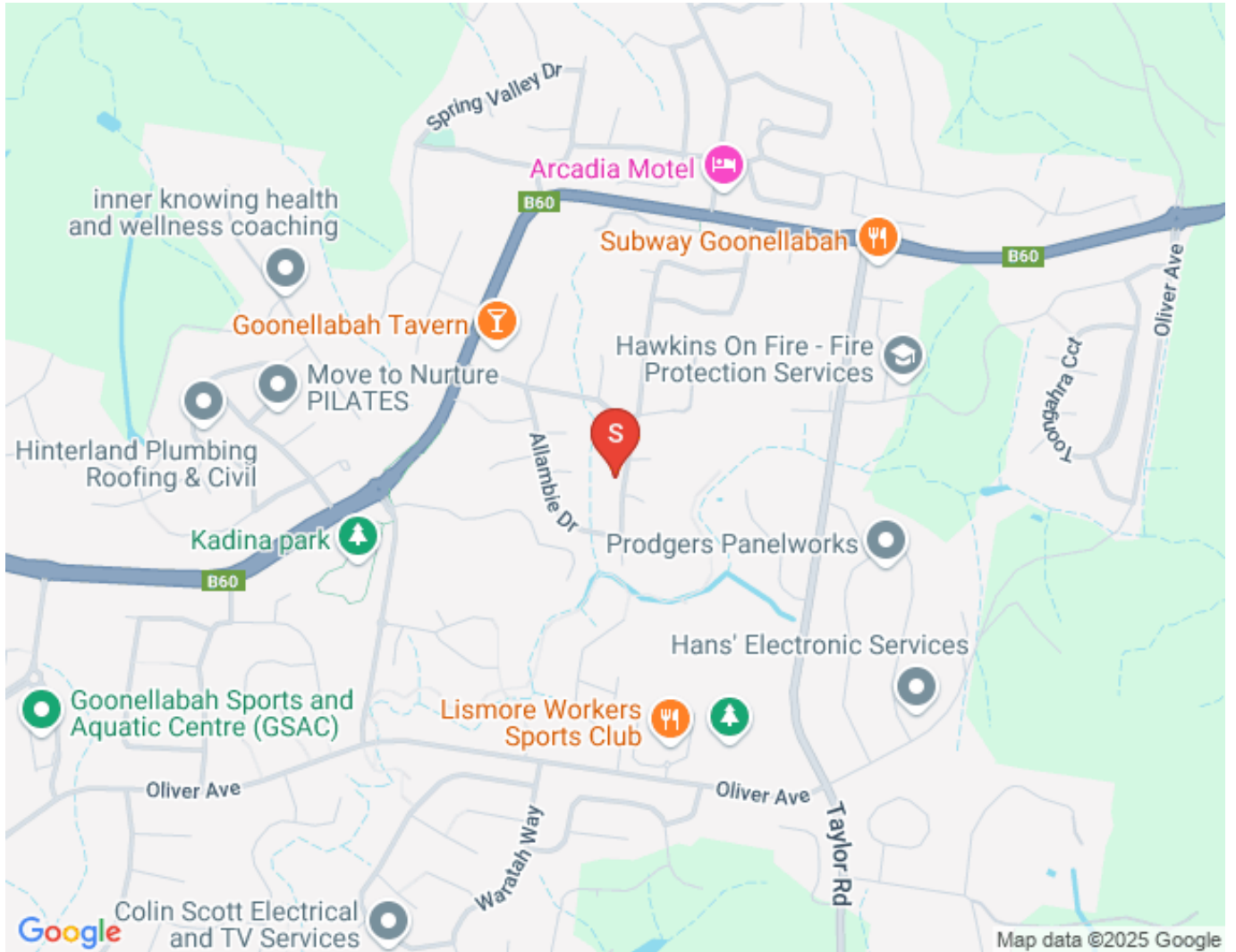
Dimensions are approximate. All information contained herein gathered from sources we believe to be reliable. However we cannot guarantee its accuracy and interested persons should rely on their own enquiries. © visionmedia vision 2025.

INT : 125.35m<sup>2</sup>  
 EXT : 51.10m<sup>2</sup>  
 GARAGE : 19.14m<sup>2</sup>



**39 Pindari Crescent, Goonellabah**

## Map



## Contact For Inspection



### **BENJAMIN CONTE**

LICENSED REAL ESTATE AGENT

---

0408 368 913

[ben@walmurray.com.au](mailto:ben@walmurray.com.au)